

Supplementary Materials

Supplementary Data S4. HPLC Analysis for 1–3 and the G59 and BD-1-6 Extracts

Contents

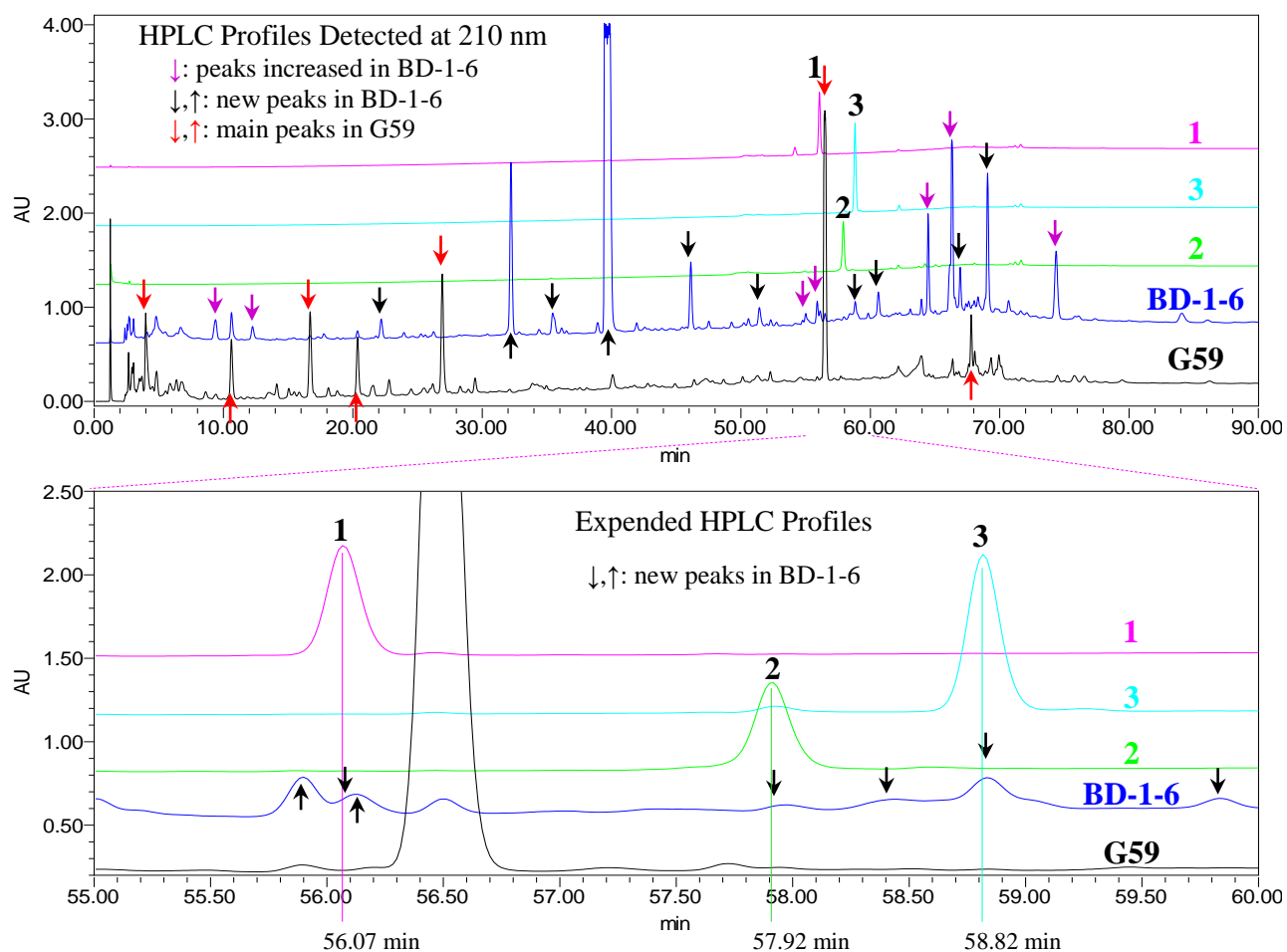
Content	Page
1. Conditions for the HPLC analysis	1
2. HPLC profiles detected at 210 nm	2
UV absorption curves of 1–3 and the BD-1-6 and G59 extracts at the indicated t_R	2
UV absorption curves of the peaks in HPLC profiles of BD-1-6 and G59 at the indicated t_R	3
3. HPLC profiles detected at 236 nm	5
4. HPLC profiles detected at 254 nm	7
5. HPLC profiles detected at 300 nm	7
6. HPLC profiles detected at 327 nm	8

1. Conditions for the HPLC analysis

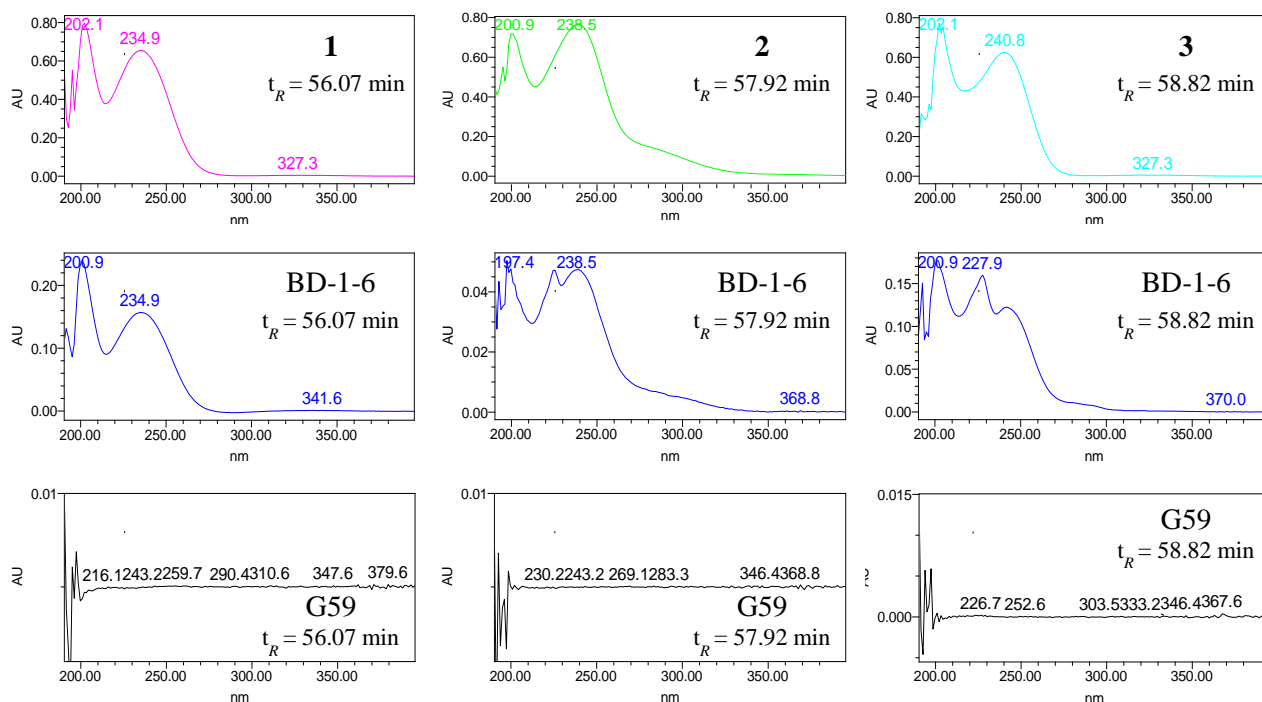
The HPLC analysis was performed using a Waters HPLC equipment using Waters 600 controller, Waters 600 pump, Waters 2414 refractive index detector, Waters 2996 photodiode array detector and Waters Empower™ software.

The EtOAc extracts of G59 and BD-1-6 cultures and the compounds 1–3 were dissolved in MeOH to prepare a 10 mg/ml sample solution for HPLC analysis. HPLC analysis of the samples was carried out on a Venusil MP C18 column (5 μ m, 100 Å, 4.6 mm \times 250 mm; Agela Technologies) using the same Waters HPLC equipment mentioned. Each 5 μ l of sample solutions was injected into the column after filtration by a 0.22 μ m pore membrane filter. Then, the elution was performed using MeOH–H₂O in linear gradient (20% MeOH at initial time 0 min \rightarrow 100% MeOH at 60 min \rightarrow 100% MeOH at 90 min; flow rate, 1 ml/min). The acquired photodiode array (PDA) data were processed by Empower PDA software to obtain targeted HPLC data.

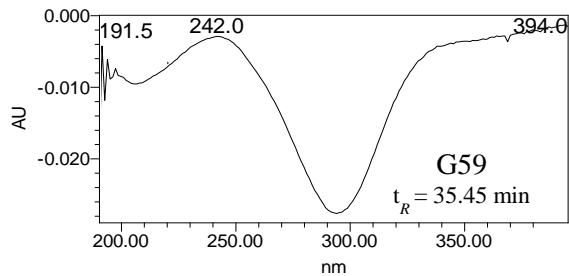
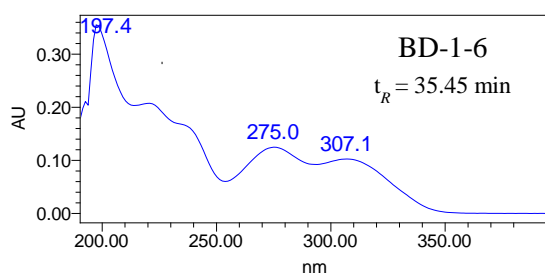
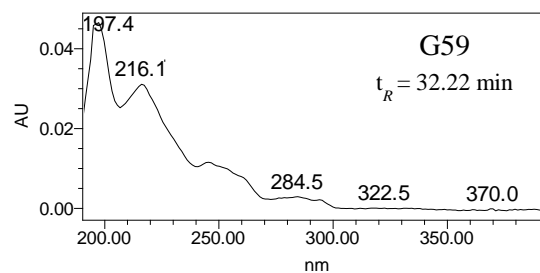
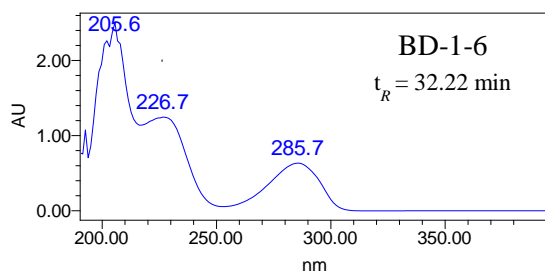
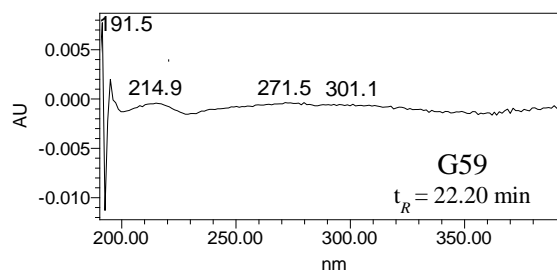
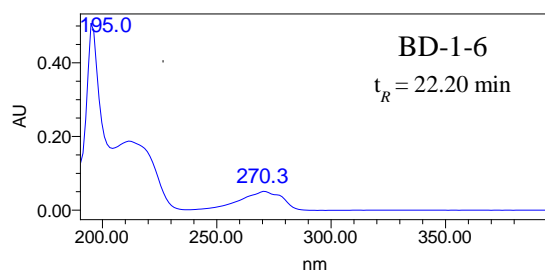
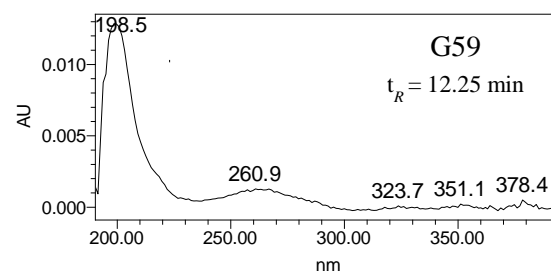
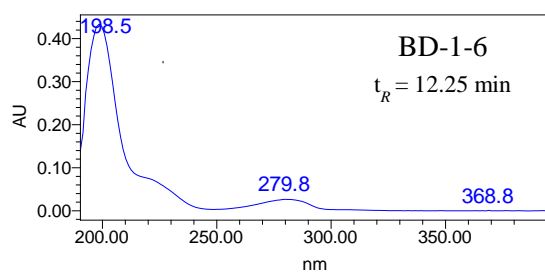
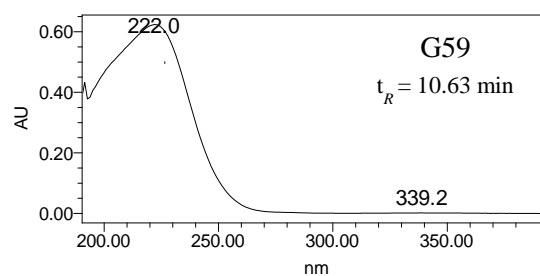
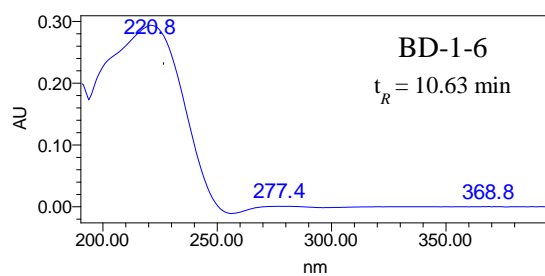
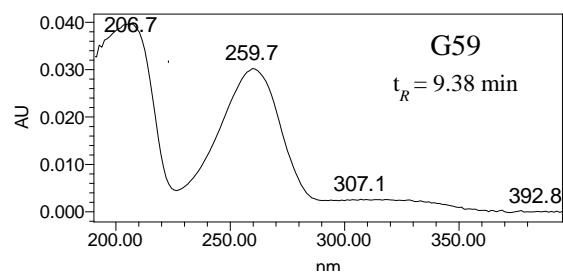
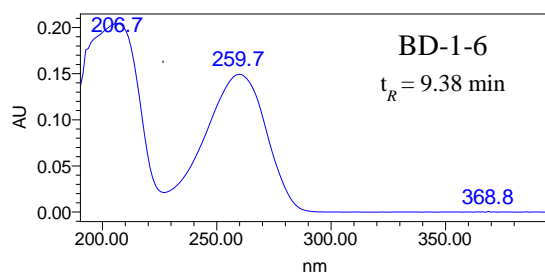
2. HPLC profiles detected at 210 nm

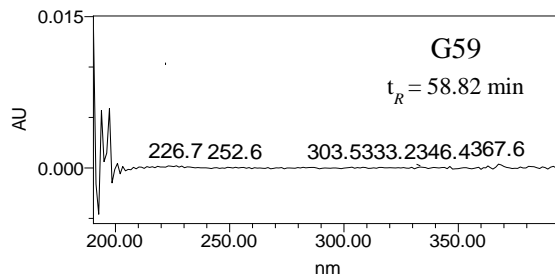
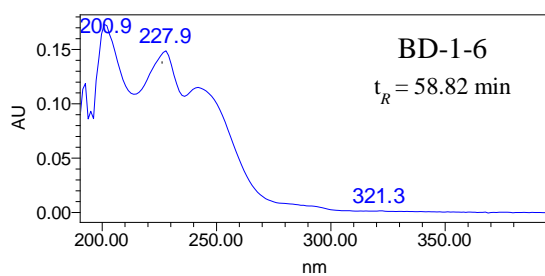
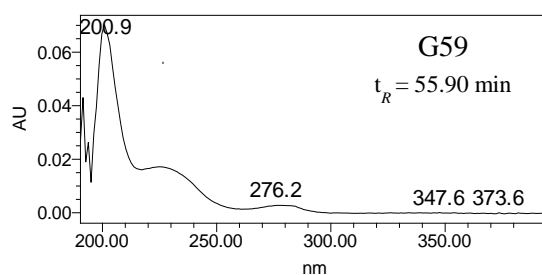
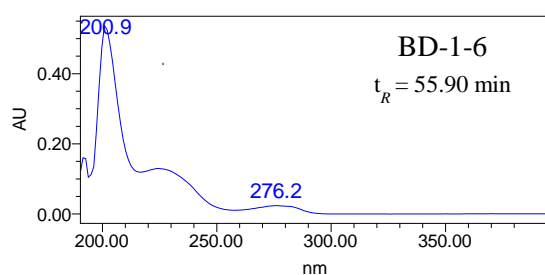
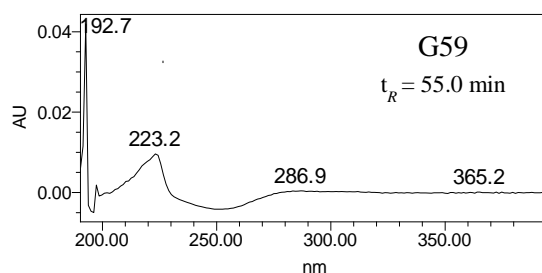
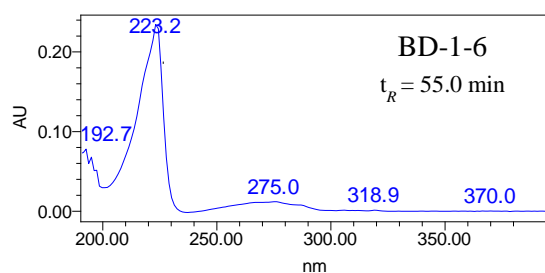
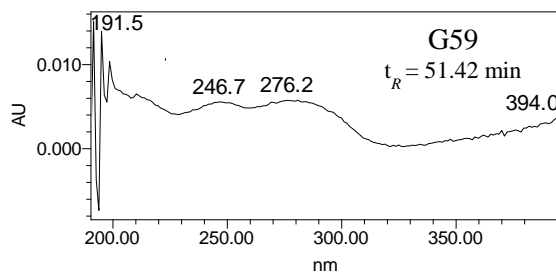
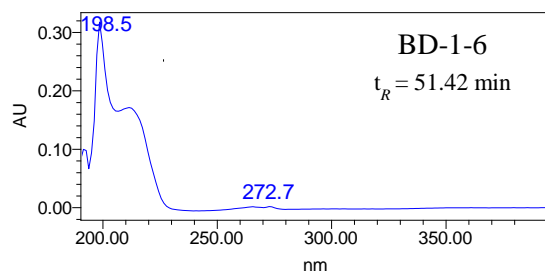
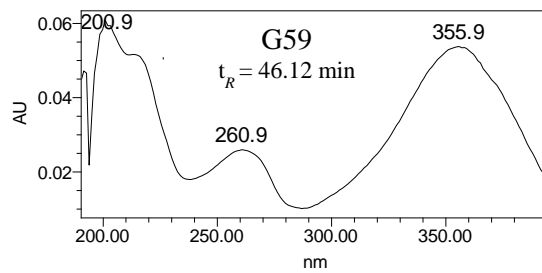
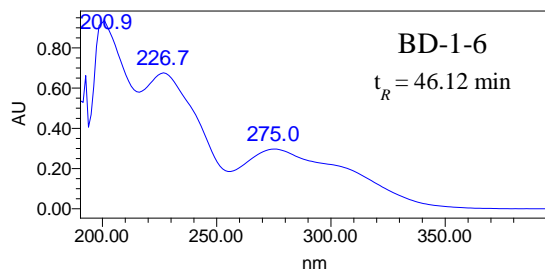
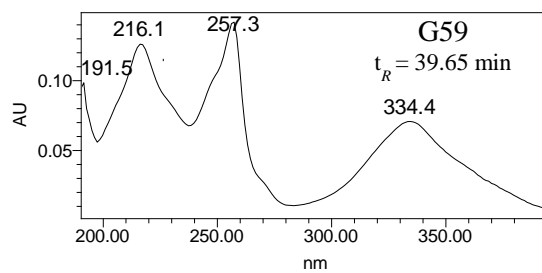
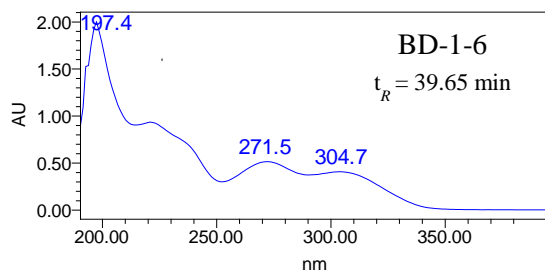


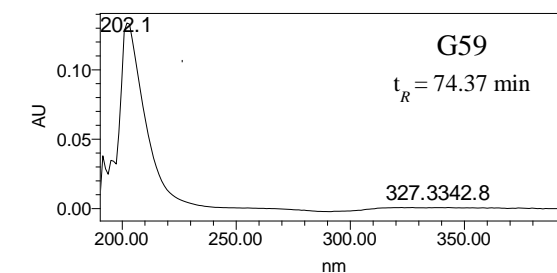
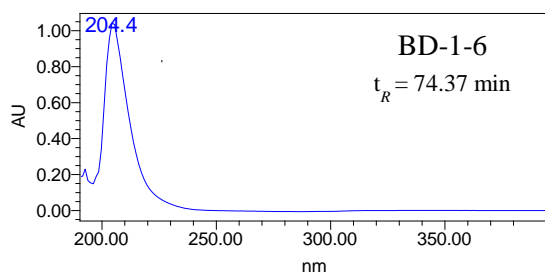
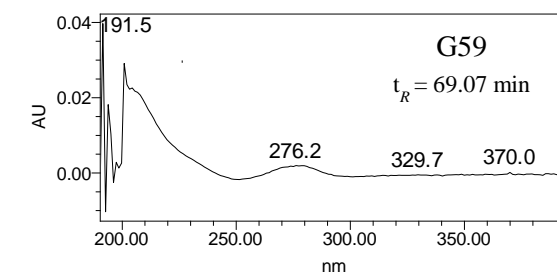
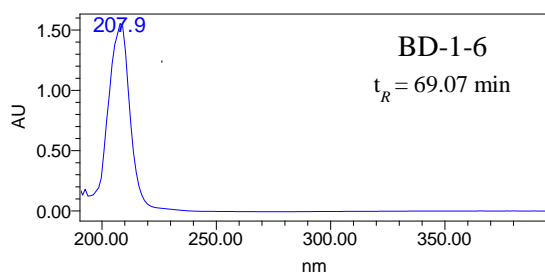
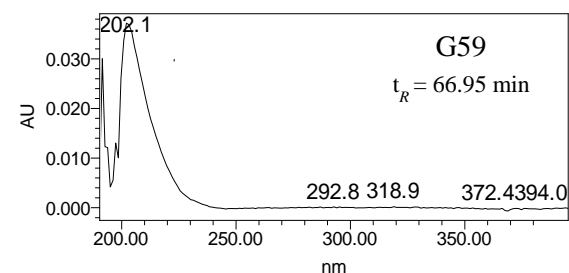
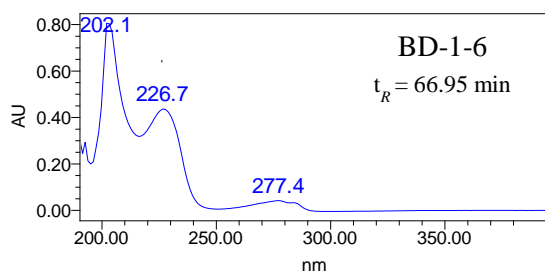
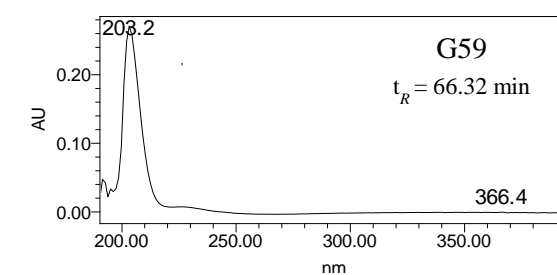
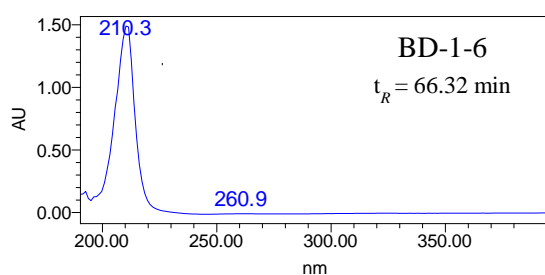
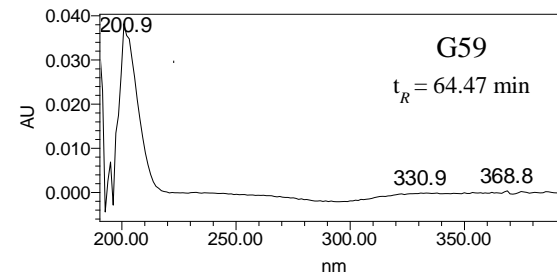
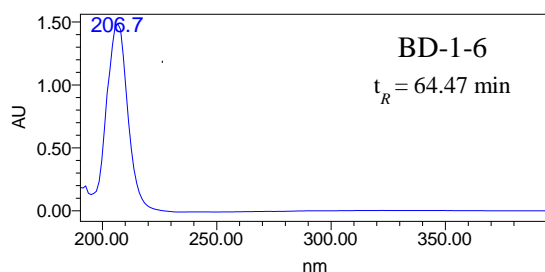
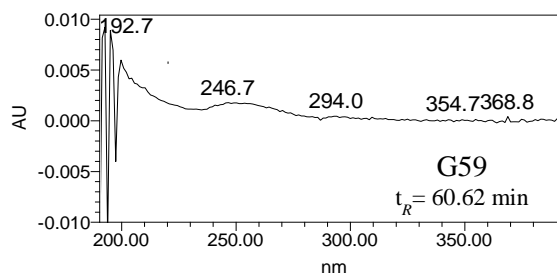
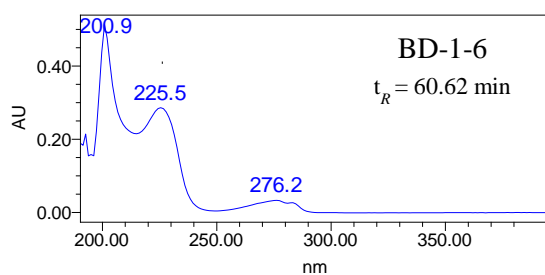
UV absorption curves of **1–3** and the BD-1-6 and G59 extracts at the indicated t_R



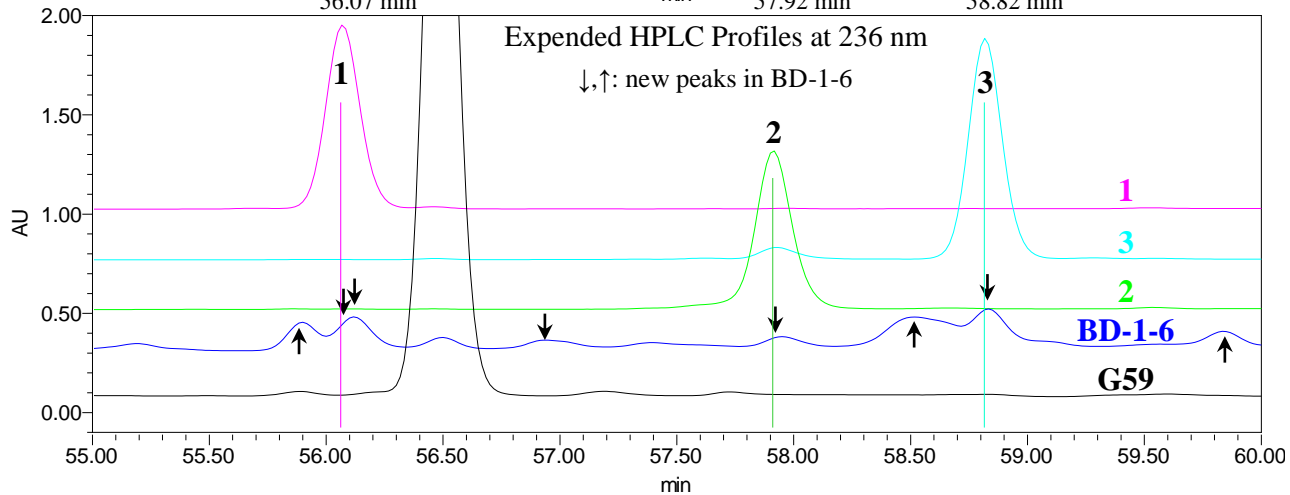
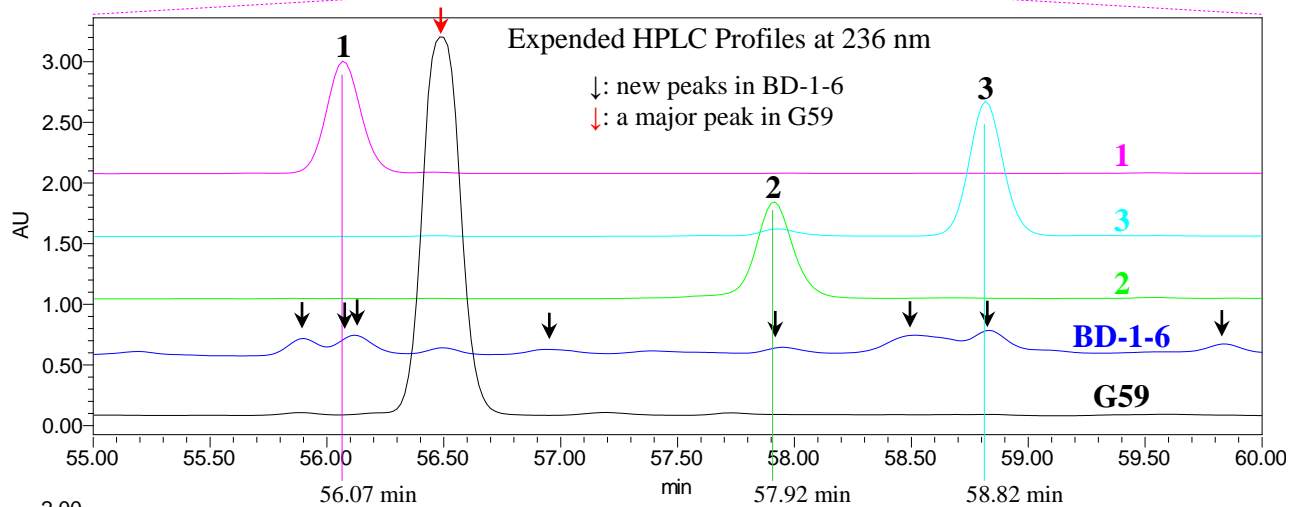
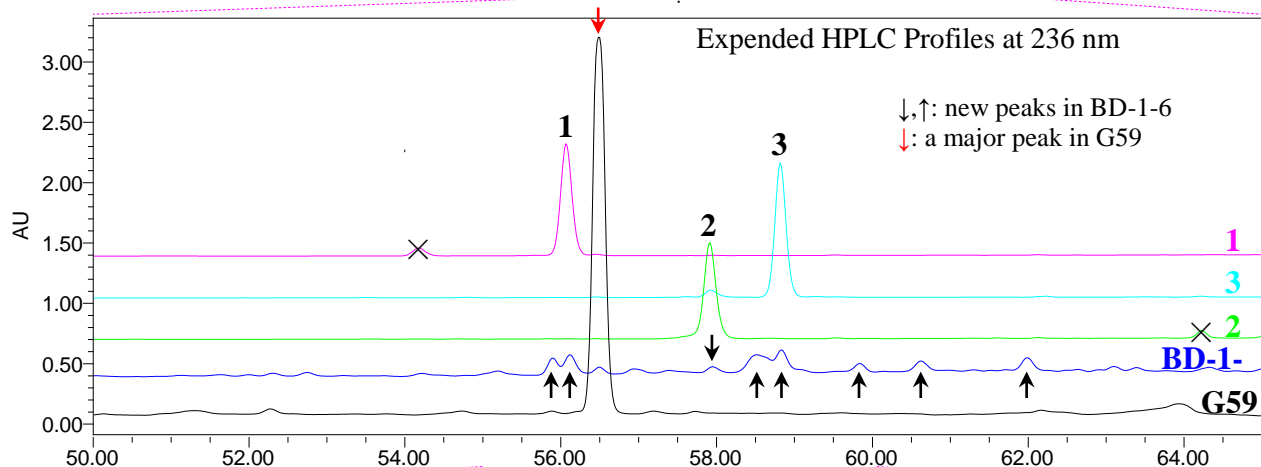
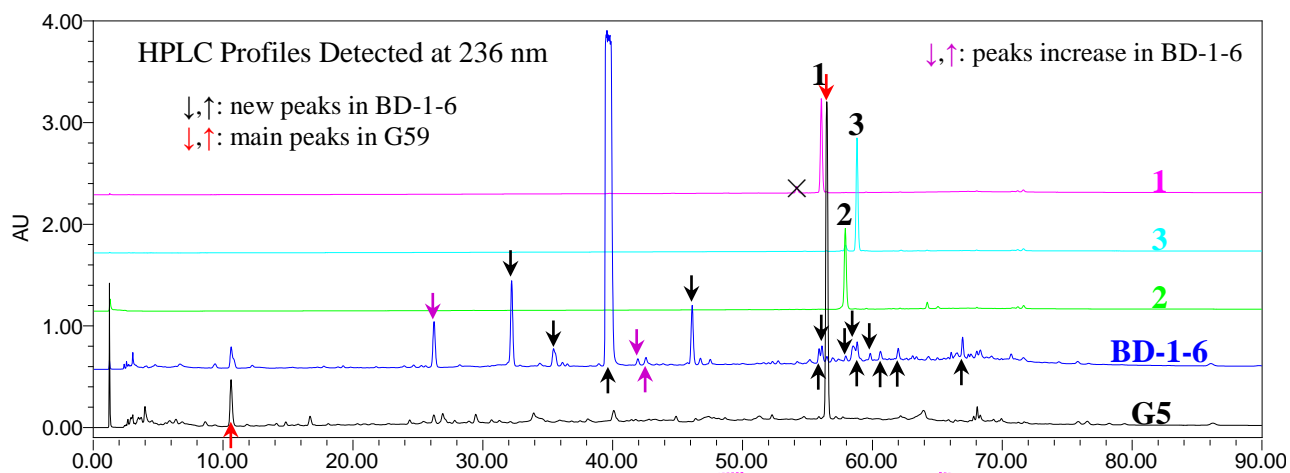
UV absorption curves of the peaks in HPLC profiles of BD-1-6 and G59 at the indicated t_R



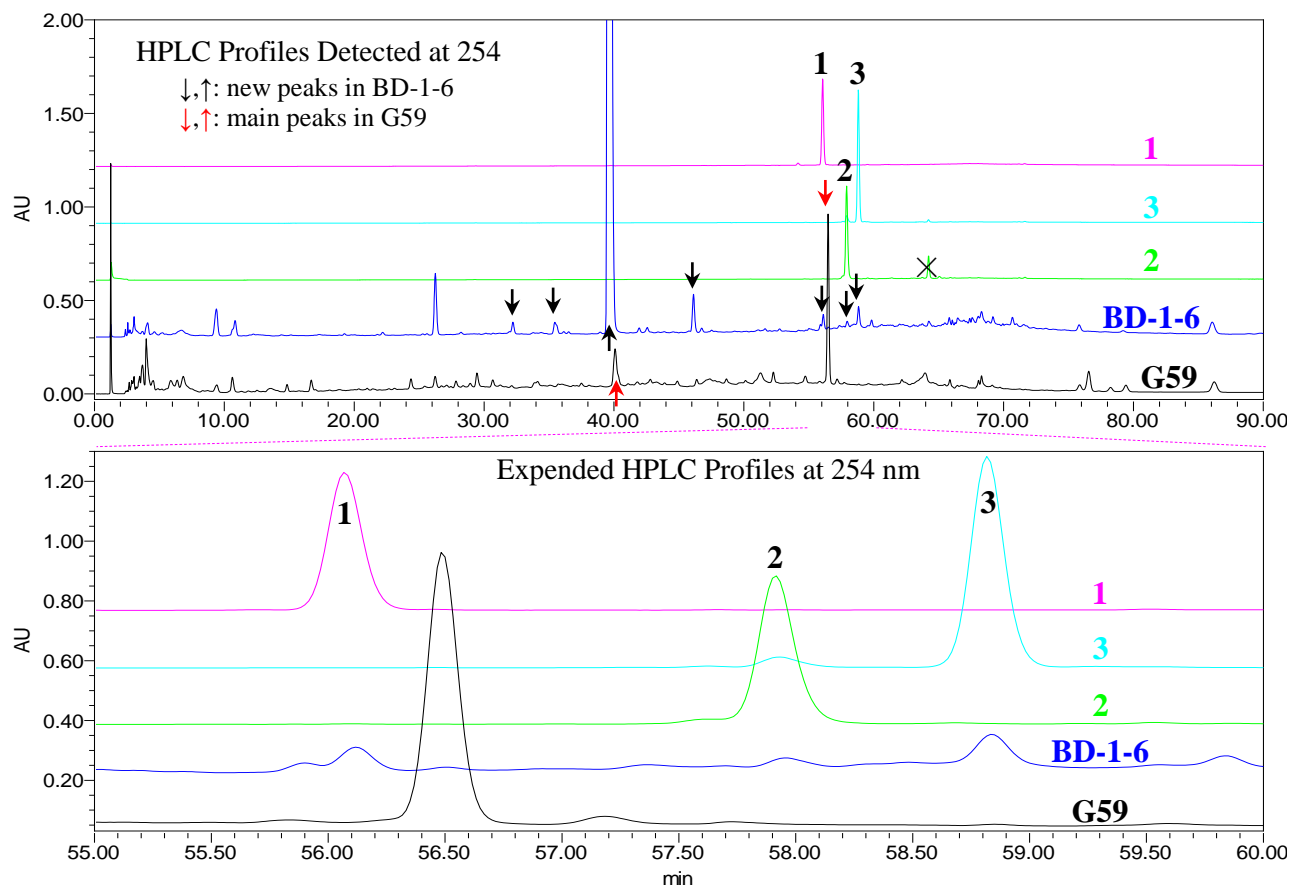




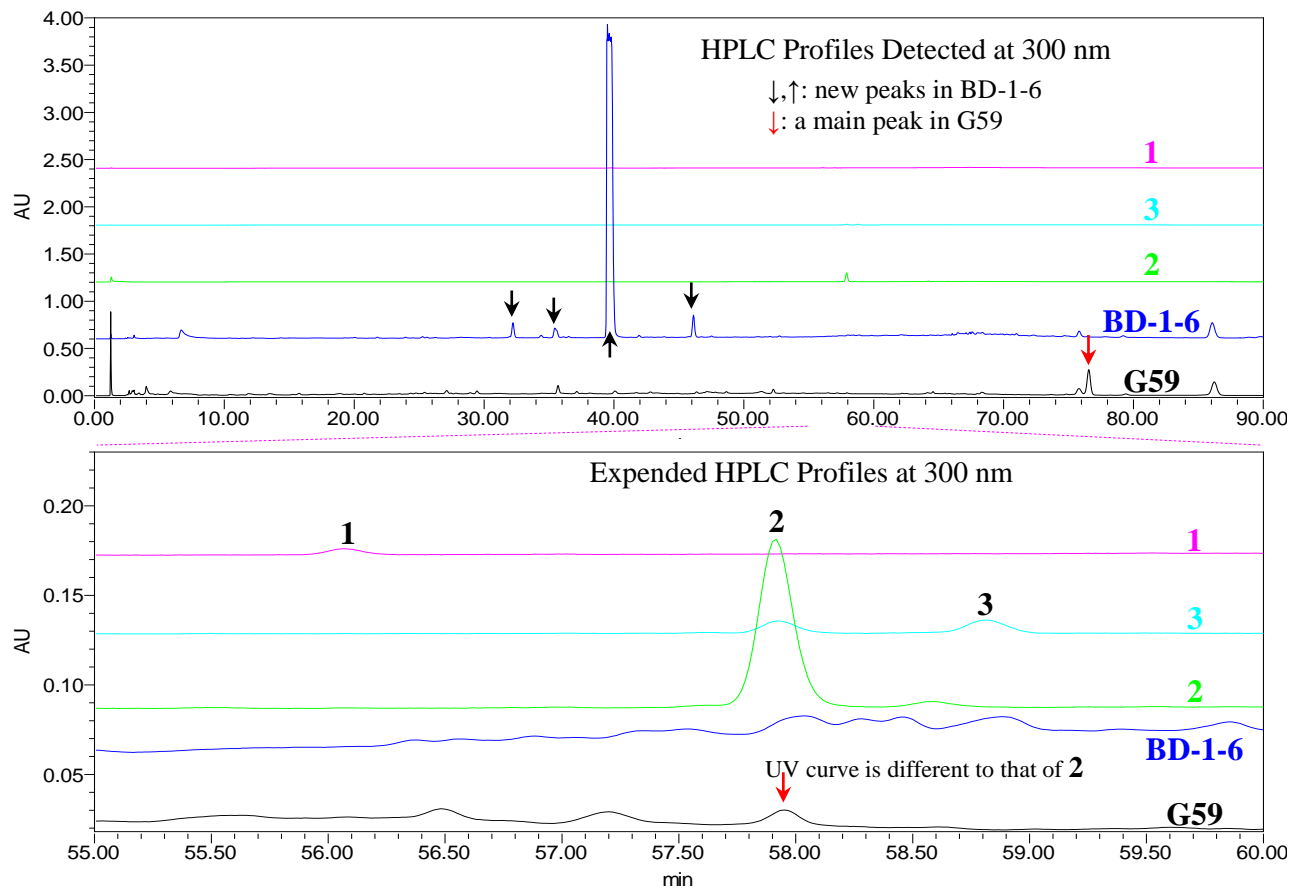
3. HPLC profiles detected at 236 nm



4. HPLC profiles detected at 254 nm



4. HPLC profiles detected at 300 nm



4. HPLC profiles detected at 327 nm

